

# TINTORETRIEVER BIO SB PRESSURE COOKER

Affordable, Precision Heat Epitope, and Nucleic Acid Retrieval



**MORE ECONOMICAL THAN OTHER SUPPLIERS!**

Specifically, IHC for Immunohistochemistry, ICC for Immunocytochemistry, FISH for Fluorescent In-Situ Hybridization, and CISH for Chromogenic In-Situ Hybridization.

The Bio SB TintoRetriever Pressure cooker is a precision-controlled heat source capable of maintaining a constant and reliable temperature while minimizing the potential for evaporation of the working solution. The TintoRetriever Pressure Cooker can be used for a variety of molecular pathology applications including IHC, FISH, and CISH.

Most formalin-fixed tissues require an antigen or nucleic acid retrieval step prior to any immunochemical staining. The retrieval process breaks some of the methylene bridges that crosslink proteins in formalin-fixed tissues and allow antibodies or RNA/DNA probes to bind to unmasked epitopes or nucleic acids. Heat epitope or nucleic acid retrieval are often performed using a conventional microwave oven or water bath. The TintoRetriever Pressure Cooker is a solution for laboratories looking for a comprehensive, effective, reproducible, and reliable retrieval system.

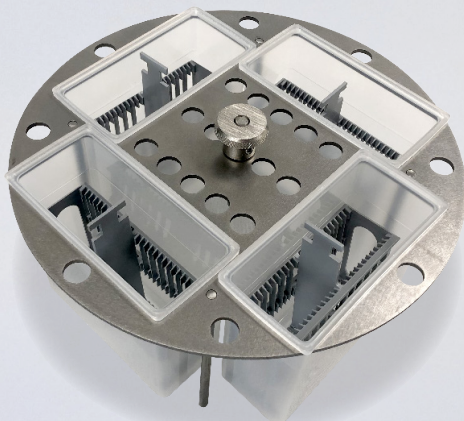
## Overview

- Cost effective
- Fast epitope retrieval
- Uniform and reproducible heat retrieval
- Built in temperature gauge for validation
- Supports CISH/FISH nucleic acid retrieval
- Supports IHC, ICC and IF epitope retrieval
- Accessories and replacement parts available!



**Above:** TintoRetriever Pressure Cooker Bundle, Includes 4 Plastic Staining Dishes, 4 Slide Holders, 1 Staining Dish Support, 200 ml ImmunoRetriever 20X Citrate, 200 ml ImmunoRetriever 20X EDTA.

Product Description	Catalog #
TintoRetriever Digital Pressure Cooker Bundle	BSB 7015
TintoRetriever Digital Pressure Cooker	BSB 7008



Product Description	Catalog #
Staining Dish Support	BSB 7086
Plastic Staining Dish	BSB 7009
Slide Holder, 24 places	BSB 7010
TintoRetriever Slide Thermometers, Pack of 5	BSB 7005

**Left:** Staining Dish Support, holds 96 slides total!