

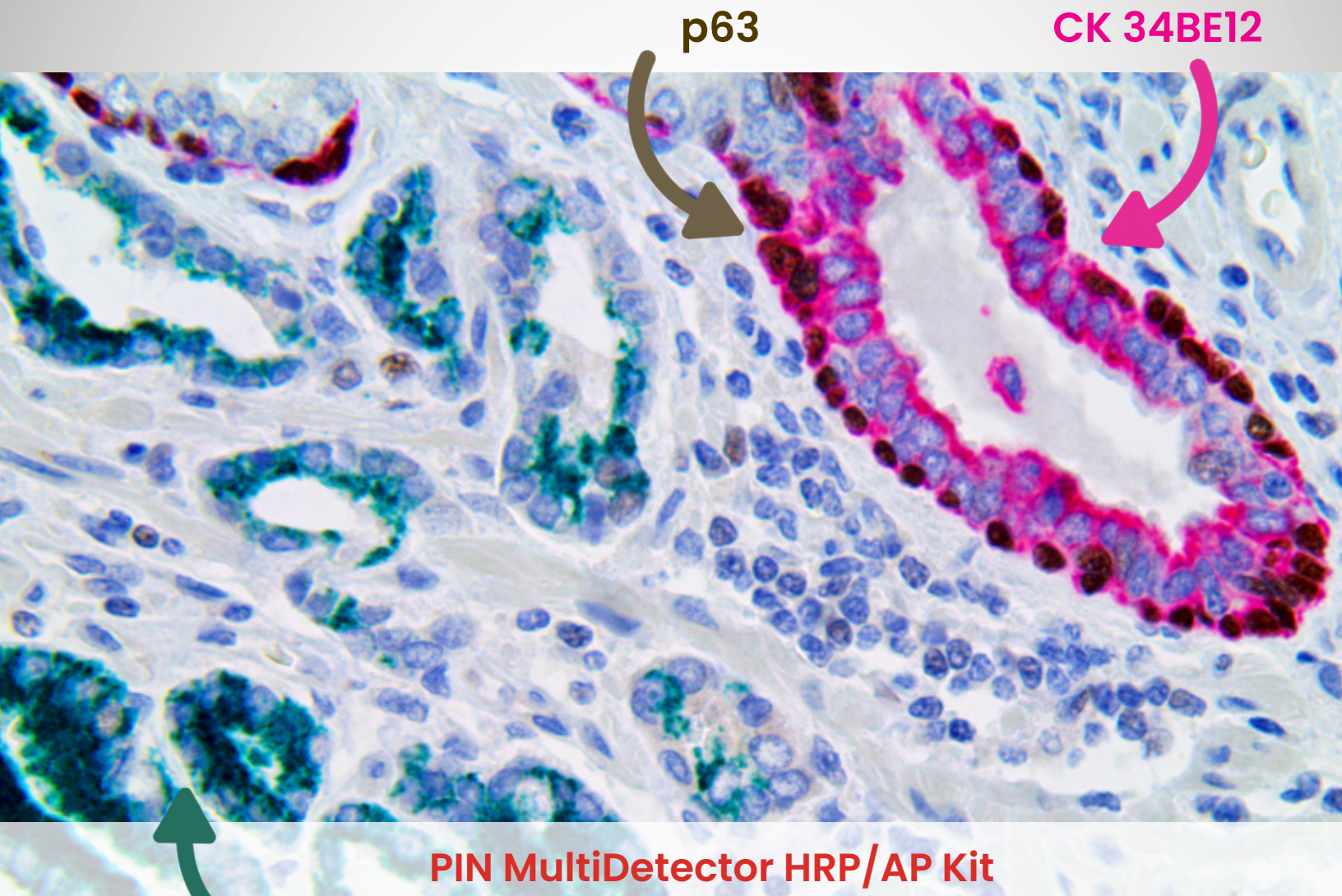
# MULTIPLEX

# BIO<sup>●●</sup>SB

# IMMUNOHISTOCHEMISTRY

---

Simple, Sensitive & Simultaneous Target Detection



**AMACR**

---

Simultaneously test for multiple IHC targets on one tissue.

Reduction in labor and reagent cost.

# Prostate Intraepithelial Neoplasia (PIN) MultiDetector HRP/AP Kit

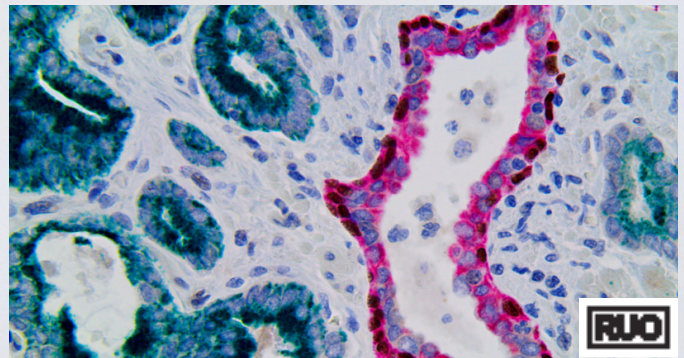
## CK 34BE12, p63 & AMACR

The Neoplasia (PIN) MultiDetector HRP/AP Kit is a Multiplex triple color IHC test designed to detect prostate cancer in the prostate glands. The basal cell indicators (p63 in DAB brown and CK34BE12 in Scarlet) stain non-affected glands and the AMACR in Green shows prostate tissue that may be affected by carcinoma. It is well established that p63 and CK34BE12 are expressed in basal cells of healthy prostate glands, but mostly absent in adenocarcinoma. AMACR (Alpha-Methylacyl CoA Racemase) is expressed in the glands and has been found to be highly expressed in prostate carcinoma and can help to distinguish PIN, a precursor lesion to Prostatic Adenocarcinoma, from benign lesions.

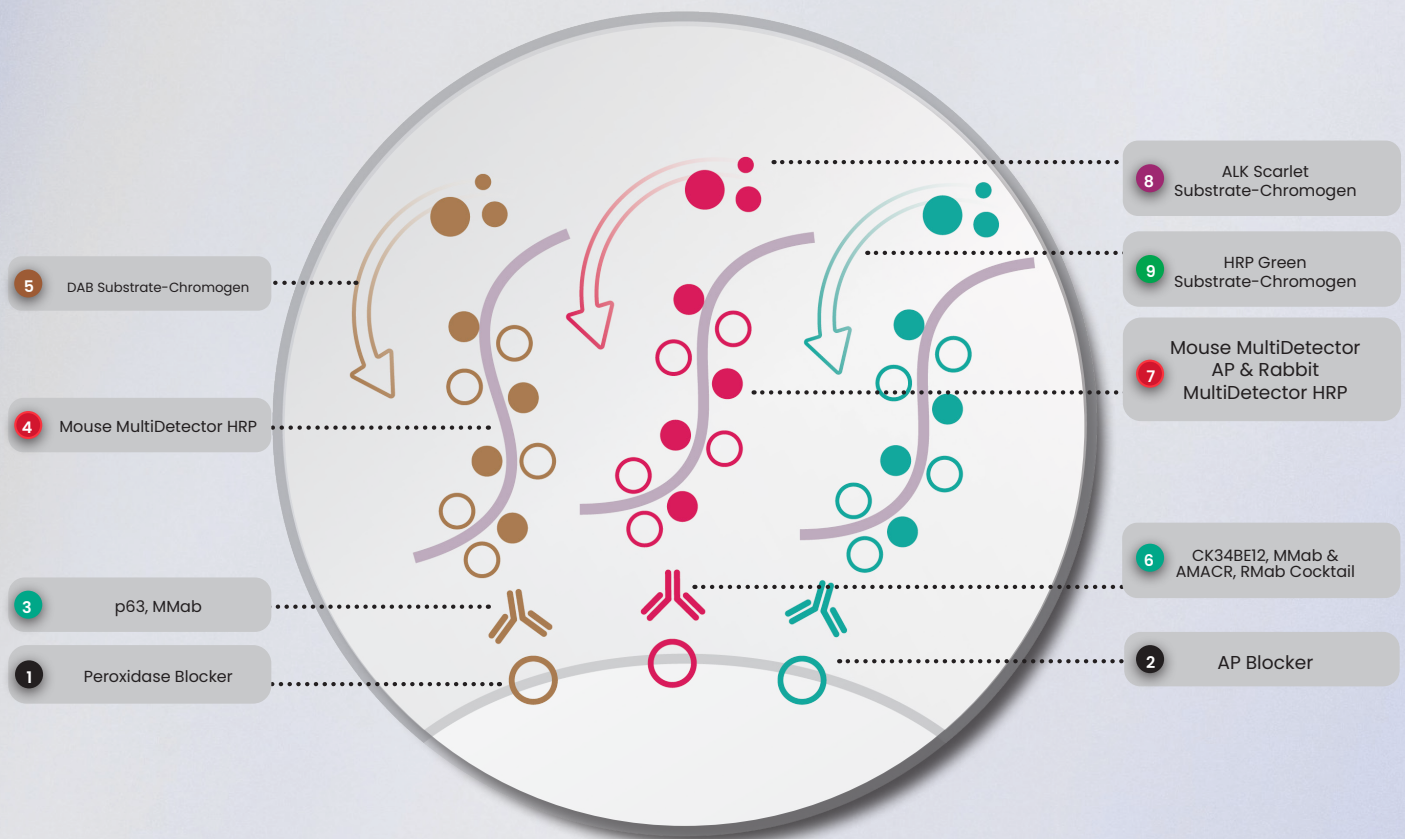
- Alpha-methylacyl CoA racemase (AMACR) expression can help pathologists distinguish prostate carcinoma foci from benign lesions or healthy glands that retain p63 and CK34BE12 expression.
- Efficient two-layer multiplex protocol reveals the expression and location of biomarkers important to the structure and health of the tissue.
- Non-Biotin, Multidetector Fab Monomeric anti mouse & anti rabbit Immunohistochemistry detection technology.
- Strong and contrasting chromogens give a vivid and durable stain for easy interpretation.
- Ready-to-Use, High Sensitivity System especially designed for Immunohistochemistry of formalin-fixed tissues.

### PIN MultiDetector HRP/AP Detection Systems

Product Description	Volume	Catalog #
PIN MultiDetector	70 tests	BSB-0352-7
PIN MultiDetector	150 tests	BSB-0352-15
PIN MultiDetector	500 tests	BSB-0352-50



PIN MultiDetector HRP/AP Kit



# HPV MultiDetector HRP/AP Kit

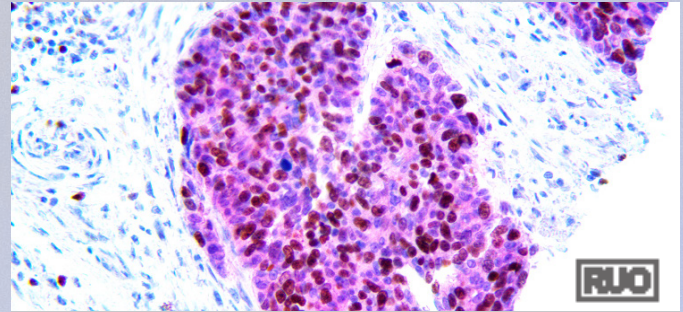
## p16 & Ki-67

The HPV MultiDetector HRP/AP Kit dual stain includes a cocktail of Ki67 and p16 antibodies to form a sensitive and specific test for significant cervical lesions. Cervical Intraepithelial Neoplasia (CIN) is the precursor to cervical cancer, the second most common malignancy among women. Colocalized Ki67 and p16 help identify HPV related CIN, Genito Urinary and Head and Neck lesions, for proper diagnosis and prevention of under- or over-treatment. Detection of nuclear Ki67 with DAB chromogen and nuclear and cytoplasmic p16 with ALK Scarlet provides an easy visualization of the colocalized antibodies for efficient diagnosis on biopsies and liquid cytology samples.

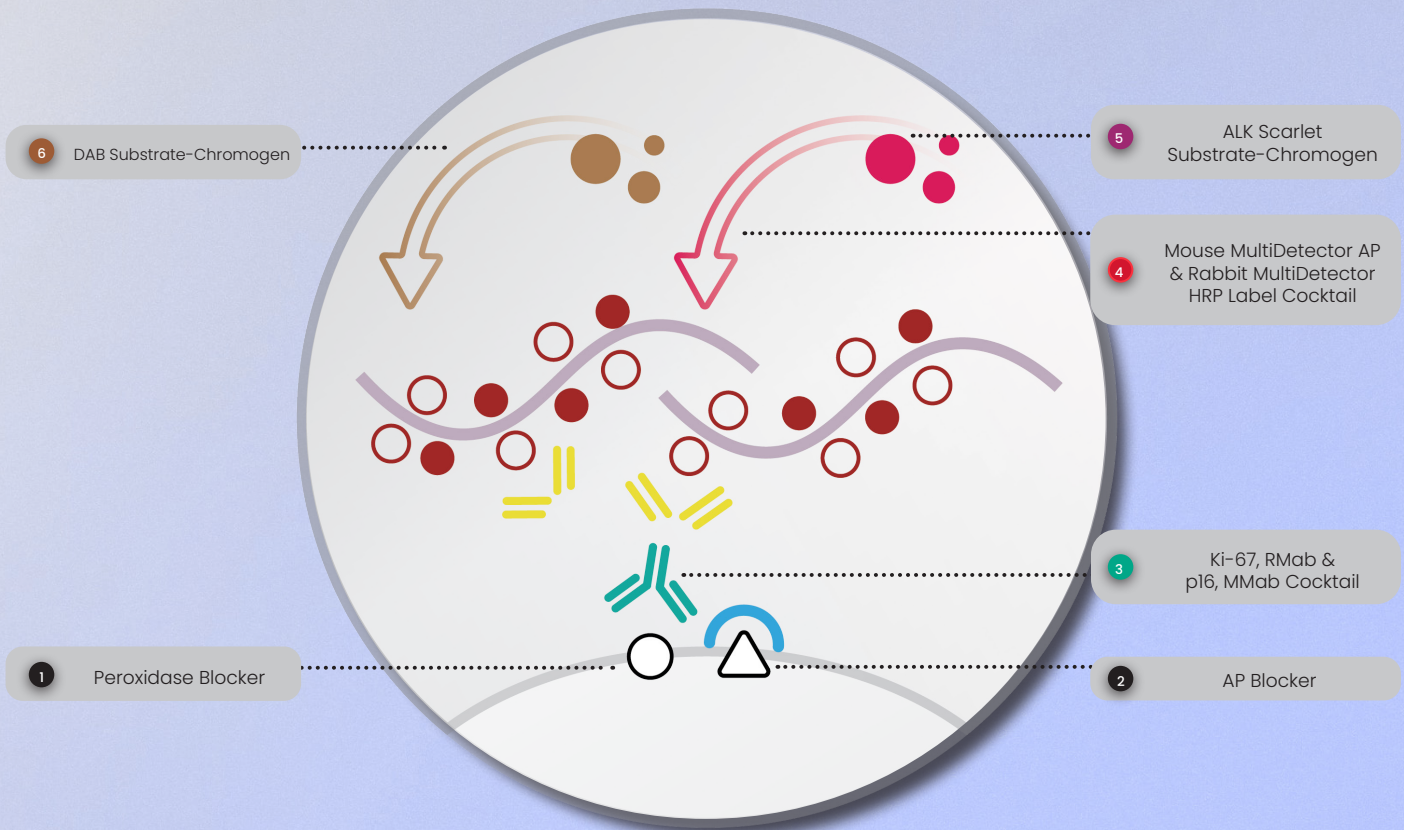
- p16 is a tumor-suppressor protein commonly used to detect squamous and glandular neoplasia in HPV-positive patients
- Ki67 is a nuclear cell proliferation marker, used to diagnose the grade of abnormal cell growth.
- Non-Biotin, Multidetector Fab Monomeric anti mouse & anti rabbit Immunohistochemistry detection technology. Immunohistochemistry Detection Technology
- Strong and contrasting chromogens give a vivid and durable stain for easy interpretation.
- Ready-to-Use, High Sensitivity System especially designed for Immunohistochemistry of formalin-fixed tissues.

### HPV MultiDetector HRP/AP Detection Systems

Product Description	Volume	Catalog #
HPV MultiDetector	70 tests	BSB-0354-7
HPV MultiDetector	150 tests	BSB-0354-15
HPV MultiDetector	500 tests	BSB-0354-50



HPV MultiDetector HRP/AP Kit

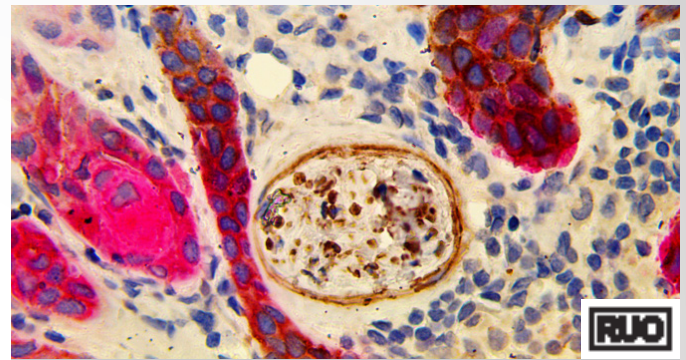


# PNI Carcinoma MultiDetector HRP/AP Kit

CK 5/6 & NGFR

The PNI Carcinoma MultiDetector HRP/AP Kit is a dual stain that allows for the simultaneous visualization of skin carcinomas and nerve tissue. In cutaneous squamous and basal cell carcinoma, Perineural Invasion (PNI) is the infiltration of tumor within the perineural space. PNI is an uncommon manifestation of SCC and BCC but can indicate adverse outcomes including recurrence, metastasis, poor prognosis, and death. This kit has been optimized with MultiDetector HRP and AP Labels and contrasting chromogens to clearly differentiate tumor cells expressing High Molecular Weight cytokeratin (CK 5/6 in Scarlet) from nerve cells expressing Nerve Growth Factor Receptor (NGFR in Brown).

- IHC may be more accurate than routine H&E in diagnosing PNI, with significant implications for patient staging, prognosis, and management.
- Multiplex IHC may further improve PNI detection by dual staining for cytokeratins (CK 5/6) and a nerve marker (NGFR).
- Detects Squamous and Basal Cell Carcinomas and nerve bundles using FFPE tissues or frozen Mohs tissue sections.
- Non-Biotin, multidetector Fab monomeric anti mouse & anti rabbit Immunohistochemistry detection technology.
- Strong and contrasting chromogens give a vivid and durable stain for easy interpretation.
- Ready-to-Use, High Sensitivity System especially designed for Immunohistochemistry of formalin-fixed tissues.



PNI Carcinoma MultiDetector HRP/AP Kit

## PNI Carcinoma MultiDetector HRP/AP Detection Systems

Product Description	Volume	Catalog #
PNI Carcinoma MultiDetector	70 tests	BSB-0353-7
PNI Carcinoma MultiDetector	150 tests	BSB-0353-15
PNI Carcinoma MultiDetector	500 tests	BSB-0353-50

