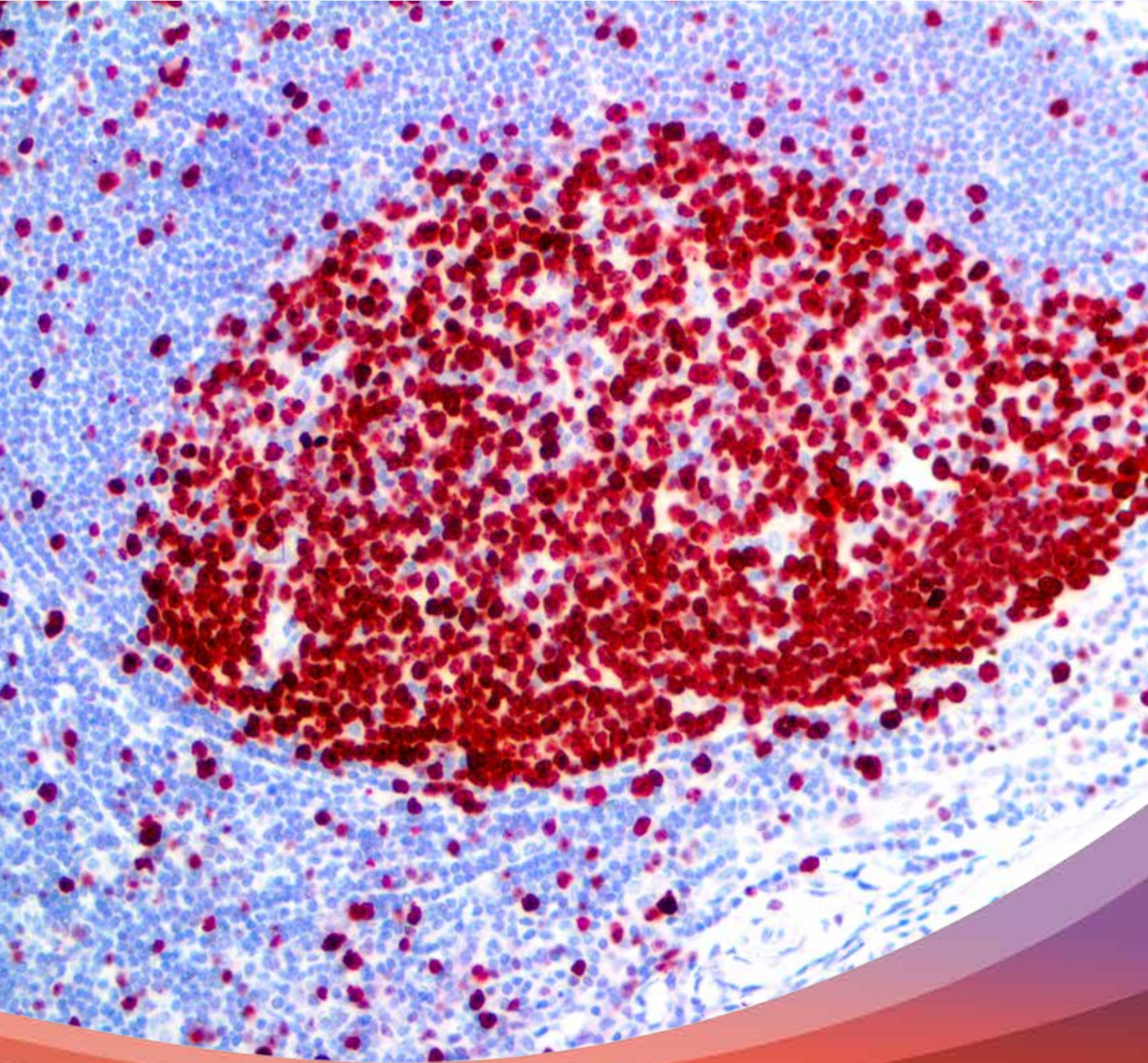


IMMUNOHISTOCHEMISTRY

TECHNICAL GUIDE

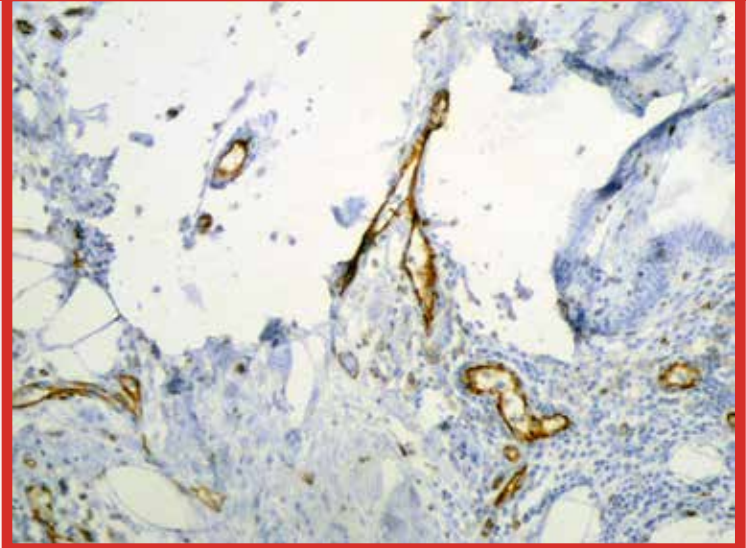
Simple Tips to Solve Common IHC Problems



Poor Tissue Adhesion

Poor Tissue adhesion leads to detachment, airbubbles, wrinkling and tissue damage. Stable and strong adhesion of a tissue specimen to the microscope slide surface is important for achieving successful and consistent sample preparation and IHC staining.

Use our Bio SB Hydrophilic Plus Slides with over 3x as many charges to prevent tissue detachment and promote reagent dispersal over the entire working area of the slide. This ensures consistent and uniform results in Immunohistochemistry and a clearer picture of the tissue morphology.

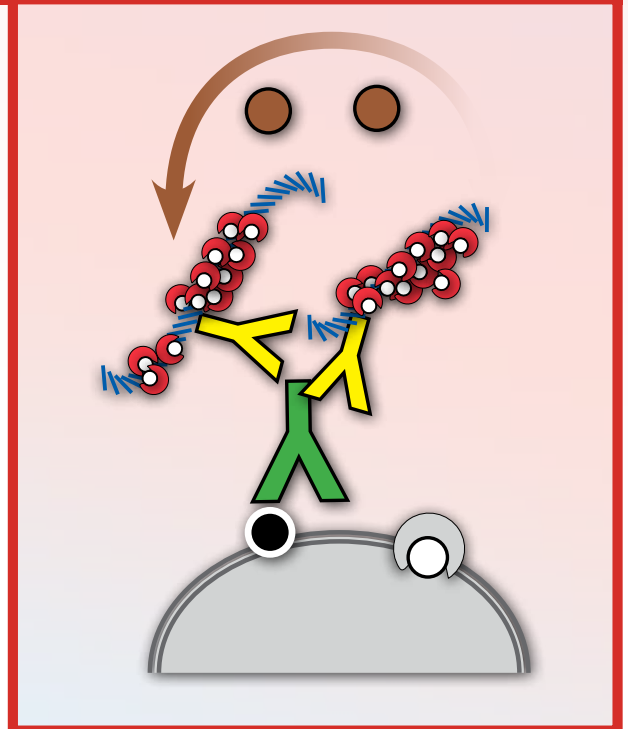


Weak Nuclear Detection

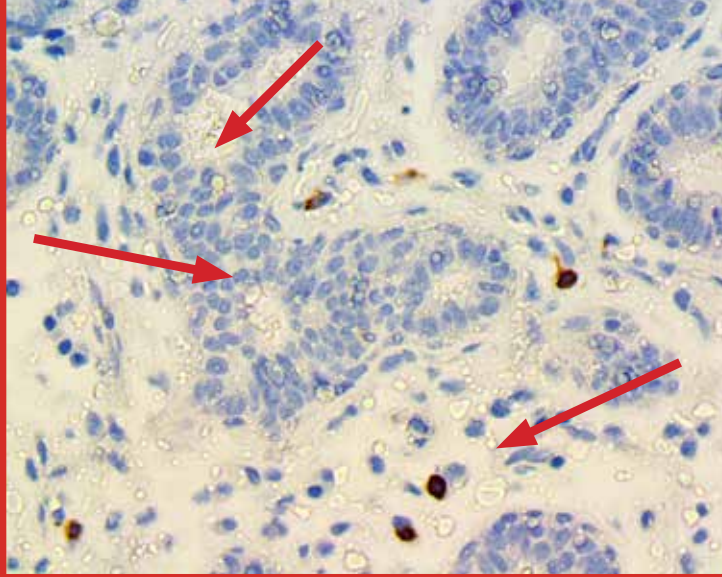
Weak nuclear signals and excessive background staining can be caused by low quality detection system chemistry.

Use our Bio SB Fab Mouse and Rabbit Polydetector Plus Micropolymer Detection System with a much smaller micro-polymer molecule compared to our competitors. You can achieve reliable, highly specific and sensitive nuclear staining, even on tough targets!

The PolyDetector Plus IHC Detection System incorporates an Immunoglobulin link and a Fab Micropolymer label. This multiple component Fab Micropolymer delivers a highly sensitive and specific signal even in a shorter time-frame than comparable polymeric detection systems.



Residual Paraffin

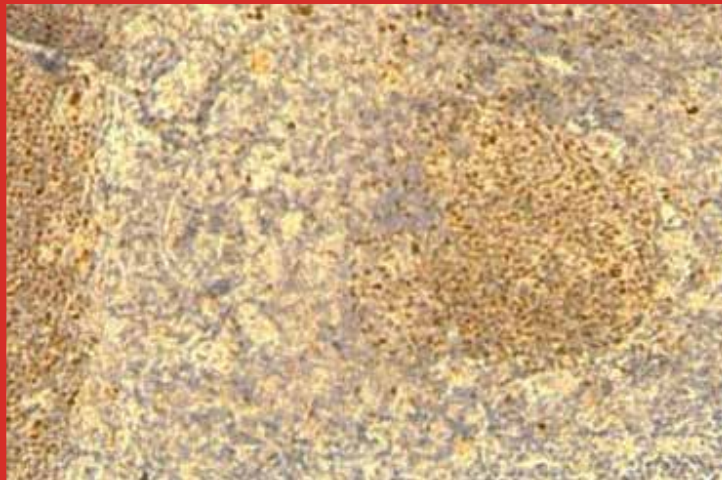


Microscopic paraffin residue can remain, even after HEIR and deparaffination steps are taken. This microparaffin residue can effect the specificity and sensitivity of the IHC signals.

Using our Bio SB ChromoProtector before mounting slides has been shown to completely eliminate paraffin or micro-paraffin residue from tissues.

Bio SB ChromoProtector also protects substrate-chromogens that are soluble or fade with solvents prior to mounting with solvent mounting media and thus allows for a solvent-free environment when conducting IHC procedures.

Non-Specific Staining

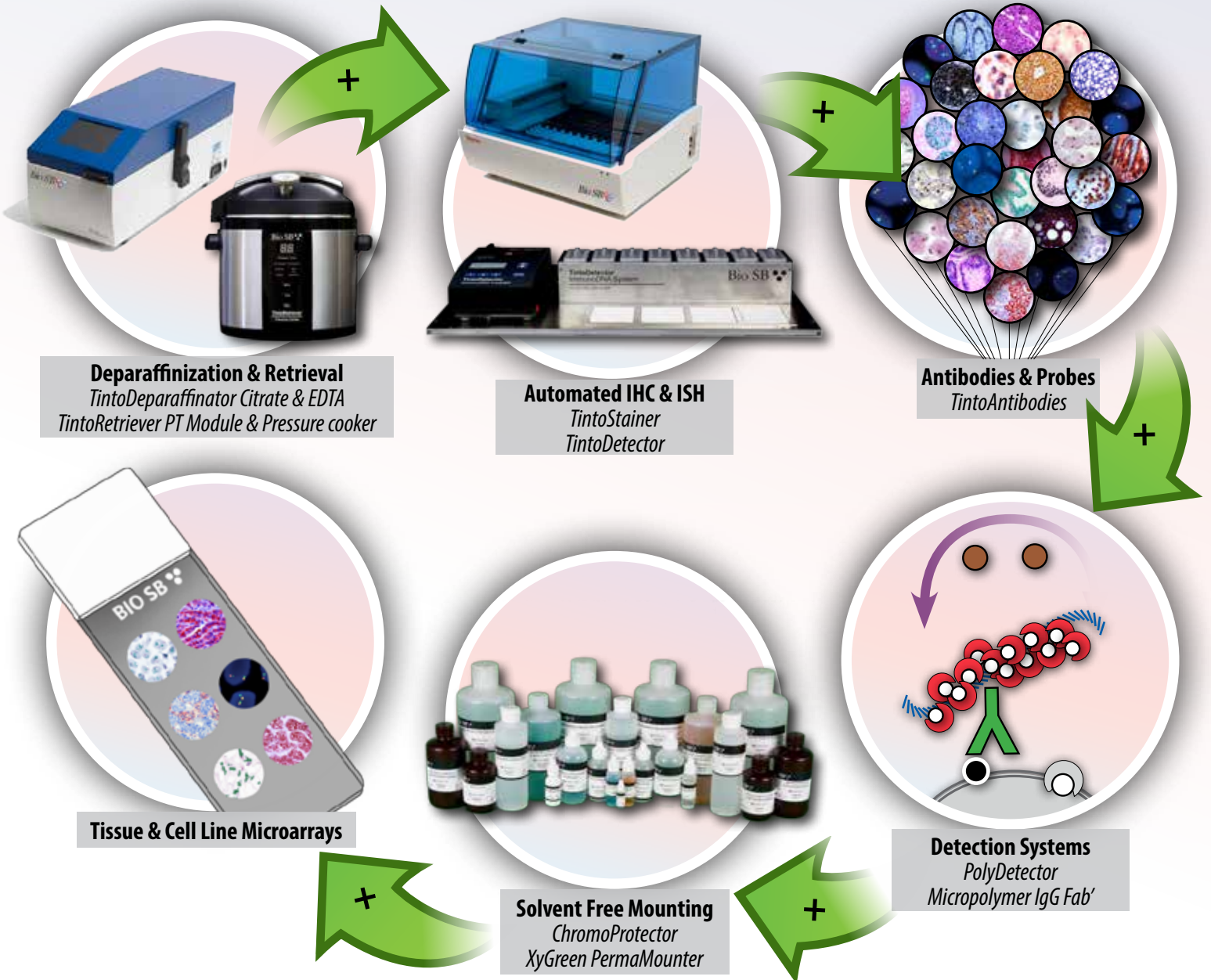


Low affinity mouse monoclonal and rabbit polyclonal antibodies can sometimes lead to non-specific signals and background staining, which leads to an unclear diagnosis.

Bio SB's Rabbit Monoclonal antibodies can have 10-100 times higher affinity than some mouse monoclonals for clear IHC results. Bio SB is proud to present one of the largest portfolios of rabbit monoclonal antibodies available in the molecular pathology industry with a selection of over 220 Rabbit monoclonal antibodies, .

The Total Solution for IHC

Since its inception in Santa Barbara, California in 1998, Bio SB has been operating in an ISO 13485:2003 and FDA cGMP 820 approved facility, working to provide high quality & cost effective immunochemicals to researchers, clinicians, and pathologists worldwide. With our in-depth knowledge of immunohistochemical research, production, and manufacturing, Bio SB produces antibodies, ancillaries, detection chemistries and equipment that performs at the highest specifications in the IVD industry.



Bio SB Inc.

69 Santa Felicia Drive, Santa Barbara, CA 93117, USA

Tel (USA): 1-800-561-1145 | Tel (Int): +1-805-692-2768 | Fax: 805-692-2769

E-mail: sales@biosb.com | Website: www.biosb.com