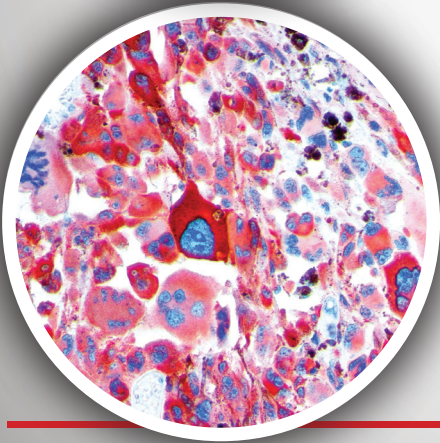
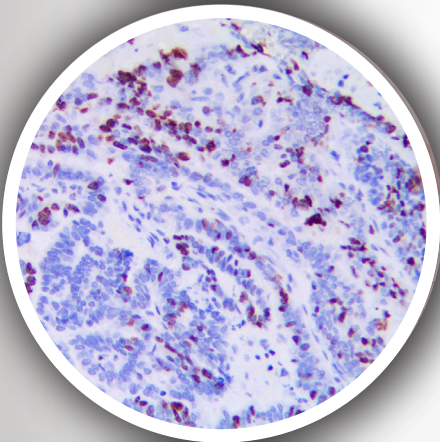
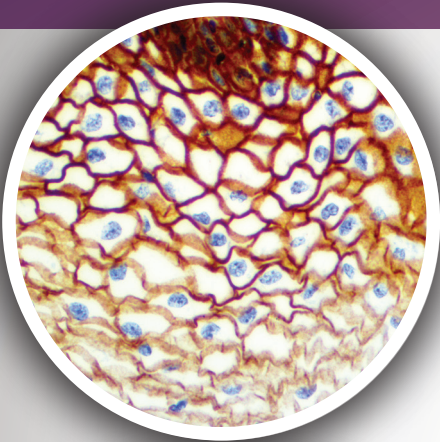


TINTOSTAINER PLUS **BIO**•**SB** AUTOMATIC IHC STAINER

Affordable | Efficient | Reliable



Automated System for Anatomical Pathology

BIO SB TintoStainer Plus Automatic IHC Stainer

- Fully automated immunohistochemical system. Completes the whole process from deparaffinization through counterstain, improving work efficiency in the laboratory.
- Unique monomeric anti-mouse and anti-rabbit Fab' and enzymes conjugated to a micropolymer allow for easier tissue penetration, increasing sensitivity and reproducibility.
- The Bio SB antibody portfolio has been validated with a concise set of immunohistochemistry and epitope retrieval protocols, offering efficient testing and high throughput of paraffin-embedded tissues.

High Efficiency Procedure

- Patented sweeping cap gap reagent motion results in better sensitivity and reproducibility.
- Three independent slide trays with up to 10 slides for a total capacity of 30 slides.
- Walkaway fully automated staining from deparaffinization through counterstaining.
- Barcode identification of slides and reagents.
- Each slide is thermally monitored for precise temperature control.
- Large IVD portfolio: 600+ IHC antibodies and two different color detection systems available.
- Full service professional support network.



Low Reagent Consumption

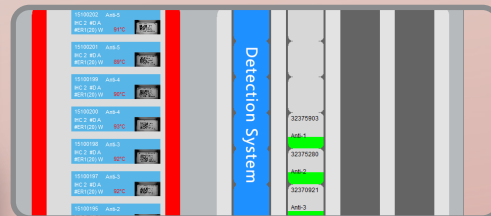
- Low reagent consumption makes tests more cost effective.

Sensitive Detection System

- Unique monomeric anti-mouse and anti-rabbit Fab' and micro-polymer conjugated to enzymes allow for easier tissue penetration which increase sensitivity and reproducibility.
- Universal IHC micropolymer detection systems, with accurate and reliable detection suitable for all antibodies.

High Performance

- Optimized staining procedures based on different types of antibody properties.
- Real-time operation status monitoring of instruments and slides.
- Teflon coated titanium allows needle to avoid cross contamination.



Left: Easy to operate user interface.

Slide	Reagent	Qty	Unit	Status
Slide 1	1	1	1	Completed
Slide 1	2	1	1	Completed
Slide 1	3	1	1	Completed
Slide 1	4	1	1	Completed
Slide 1	5	1	1	Completed
Slide 1	6	1	1	Completed
Slide 1	7	1	1	Completed
Slide 1	8	1	1	Completed
Slide 1	9	1	1	Completed
Slide 1	10	1	1	Completed
Slide 1	11	1	1	Completed
Slide 1	12	1	1	Completed
Slide 1	13	1	1	Completed
Slide 1	14	1	1	Completed
Slide 1	15	1	1	Completed
Slide 1	16	1	1	Completed
Slide 1	17	1	1	Completed
Slide 1	18	1	1	Completed
Slide 1	19	1	1	Completed
Slide 1	20	1	1	Completed

Patented Technology

- Sweeping Cap Gap Reagent Motion technology results in better sensitivity, reproducibility and homogenous signals.
- High quality and consistent results with minimal reagent use.



Antibody (Clone) Name	Retrieval Protocol	Staining Protocol
A-1-Antichymotrypsin (Polyclonal), RPab	TE45	PDP45
ACE2 (BSB-135), MMab	TE45	PDP45
ACTH (BSB-25), MMab	TC45	PDP45
Actin Muscle Specific (HHF35), MMab	TC45	PDP45
Actin Smooth Muscle (BSB-15), MMab	TC45	PDP45
Adenovirus (20/11 and 2/6), MMab	TC45	PDP45
Adipophilin/ADRP (BSB-91), MMab	TC45	PDP45
ALK-1/CD246 (RBT-ALK1), RMab	TE45	PDP45
Alpha Synuclein (BSB-114), MMab	TC45	PDP45
Alpha-Fetoprotein (BSB-23), MMab	TC45	PDP45
Amyloid A (EP335), RMab	TC45	PDP45
Amyloid Beta (RBT-A4), RMab	TC45	PDP45
Androgen Receptor (BSB-4), MMab	TE45	PDP45
Annexin A1 (BSB-95), MMab	TC45	PDP45
APOE4 (BSB-170), MMab	TC45	PDP45
Arginase-1 (EP261), RMab	TC45	PDP45
ARID1A (EP303), RMab	TC45	PDP45
ATM (EP327), RMab	TC45	PDP45
bcl-2 (BSB-5), MMab	TE45	PDP45
bcl-2 (EP36), RMab	TE45	PDP45
bcl-6 (EP278), RMab	TE45	PDP45
bcl-6 (RBT-bcl6), RMab	TE45	PDP45
Beta-Catenin (14), MMab	TC45	PDP45
Beta-Catenin (RM276), RMab	TE45	PDP45
BOB.1 (RBT BOB.1), RMab	TC45	PDP45
Brachyury (RBT-TBXT), RMab	TC45	PDP45
BRG-1/SMARCA4 (BSB-154), MMab	TE45	PDP45
c-Met/HGFR (EP1454Y), RMab	TE45	PDP45
*c-Myc (RBT-CMYC), RMab	TE45	PDP45
C4d (EP272), RMab	TE45	PDP45
*CA-125 (OC125), MMab	TC45	PDP45
CA15-3 (DF3), MMab	TC45	PDP45
CA19-9 (121SLE), MMab	TC45	PDP45

* New antibody batches received after 2024-01-01

Antibody (Clone) Name	Retrieval Protocol	Staining Protocol
Cadherin17/LI-Cadherin (EP86), RMab	TC45	PDP45
Calcitonin (Polyclonal), RPab	TE45	PDP45
Caldesmon (BSB-19), MMab	TC45	PDP45
Calponin (BSB-20), MMab	TC45	PDP45
Calretinin (RM324), RMab	TC45	PDP45
Candida (RBT-C.alb), RMab	TC45	PDP45
Carbonic Anhydrase 9 (EP161), RMab	TC45	PDP45
CD10 (RBT-CD10), RMab	TC45	PDP45
CD105/Endoglin (EP274), RMab	TC45	PDP45
CD117 (EP10), RMab	TC45	PDP45
CD117 (RM359), RMab	TC45	PDP45
CD11b (EP45), RMab	TE45	PDP45
CD11c (EP157), RMab	TC45	PDP45
CD123 IL-3Ra (BSB-59), MMab	TC45	PDP45
CD13 (38C12), MMab	TC45	PDP45
CD138 (B-A38), MMab	TC45	PDP45
CD138 (RBT-CD138), RMab	TC45	PDP45
*CD14 (7), MMab	TC45	PDP45
*CD14 (EP128), RMab	TC45	PDP45
CD147 (BSB-137), MMab	TC45	PDP45
CD15 (BSB-119), MMab	TC45	PDP45
CD16 (EP364), RMab	TC45	PDP45
CD163 (10D6), MMab	TE45	PDP45
CD1a (EP80), RMab	TC45	PDP45
*CD2 (AB75), MMab	TC45	PDP45
CD20 (L26), MMab	TC45	PDP45
CD21 (EP64), RMab	TC45	PDP45
CD23 (1B12), MMab	TC45	PDP45
CD23 (EP75), RMab	TC45	PDP45
CD25 (4C9), MMab	TE45	PDP45
CD25 (RBT-CD25), RMab	TC45	PDP45
CD3 (RBT-CD3), RMab	TC45	PDP45
CD3 Epsilon (RBT-CD3e), RMab	TE45	PDP45

* New antibody batches received after 2024-01-01

Antibody (Clone) Name	Retrieval Protocol	Staining Protocol
CD30 (Ber-H2), MMab	TC45	PDP45
CD33 (RBT-CD33), RMab	TC45	PDP45
CD34 (EP88), RMab	TC45	PDP45
CD34 (QBEnd/10), MMab	TC45	PDP45
*CD35 (EP197), RMab	TC45	PDP45
CD35 (RLB25), MMab	TC45	PDP45
CD38 (SPC32), MMab	TC45	PDP45
CD4 (BSB-179), MMab	TE45	PDP45
CD4 (RBT-CD4), RMab	TC45	PDP45
CD41/ Integrin alpha IIb (EP178), RMab	TC45	PDP45
CD42b (EP409), RMab	TC45	PDP45
CD43 (MT1), MMab	TC45	PDP45
CD44 (BSB-12), MMab	TC45	PDP45
CD45 (2B11 & PD7/26), MMab	TC45	PDP45
CD45R (MB1), MMab	TC45	PDP45
CD45RA (4KB5), MMab	TC45	PDP45
CD45RO (UCHL-1), MMab	TC45	PDP45
CD5 (RM314), RMab	TC45	PDP45
*CD56 (123C3.D5), MMab	TC45	PDP45
CD6 (BSB-54), MMab	TC45	PDP45
*CD61 (2f2), MMab	TC45	PDP45
CD61 (EP65), RMab	TC45	PDP45
CD63 (NK1/C3), MMab	TC45	PDP45
*CD68 (BSB-8), MMab	TC45	PDP45
CD68 (KP-1), MMab	TC45	PDP45
CD7 (LP15), MMab	TC45	PDP45
CD71 (10F11), MMab	TC45	PDP45
CD73 / NT5E (RM431), RMab	TC45	PDP45
CD74 (LN2), MMab	TC45	PDP45
CD79a (JCB117), MMab	TC45	PDP45
CD8 (C8/144B), MMab	TE45	PDP45
CD99 (BSB-9), MMab	TC45	PDP45
CEA (BSB-13), MMab	TC45	PDP45

* New antibody batches received after 2024-01-01

Antibody (Clone) Name	Retrieval Protocol	Staining Protocol
CEA (Polyclonal), RPab	TC45	PDP45
Chromogranin A (LK2H10), MMab	TC45	PDP45
CITED1 (BSB-177), RMab	TC45	PDP45
Claudin-1 (Polyclonal), RPab	TC45	PDP45
Claudin-4 (EP417), RMab	TC45	PDP45
Claudin-5 (EP224), RMab	TC45	PDP45
Claudin-7 (EP399), RMab	TC45	PDP45
Clusterin/Apolipoprotein J (RM437), RMab	TE45	PDP45
Cyclin D1 (RBT-14), RMab	TE45	PDP45
*Cyclin D1 (RM241), RMab	TC45	PDP45
Cytokeratin 14 (LL002), MMab	TC45	PDP45
Cytokeratin 18 (EP30), RMab	TC45	PDP45
Cytokeratin 19 (RM364), RMab	TC45	PDP45
Cytokeratin 20 (Ks20.8), MMab	TC45	PDP45
Cytokeratin 35BH11 (35BetaH11), MMab	TC45	PDP45
Cytokeratin 4 (EP4), RMab	TC45	PDP45
Cytokeratin 5 & 6 (D5 & 16B4), MMab	TC45	PDP45
Cytokeratin 5 & 6 (RM341), RMab	TC45	PDP45
Cytokeratin 7 (OV-TL 12/30), MMab	TC45	PDP45
Cytokeratin Cocktail AE1 & AE3 (AE1 & AE3), MMab	TC45	PDP45
Cytokeratin HMW 34BE12 (34BetaE12), MMab	TC45	PDP45
Cytokeratin LMW CAM5.2 (CAM5.2), MMab	TC45	PDP45
Cytokeratin MNF116 (MNF116), MMab	TE45	PDP45
Cytokeratin OSCAR (OSCAR), MMab	TC45	PDP45
Cytomegalovirus (8B1.2, 1G5.2 & 2D4.2), MMab	TC45	PDP45
Desmin (D33), MMab	TE45	PDP45
DOG1 (RBT-DOG1), RMab	TC45	PDP45
E-Cadherin (EP6), RMab	TC45	PDP45
EMA (E29), MMab	TC45	PDP45
EpCAM/Epithelial Specific Antigen (Ber-EP4), MMab	TC45	PDP45
Epstein Barr Virus LMP-1 (CS1-4), MMab	TC45	PDP45
ERG (EP111), RMab	TC45	PDP45
Estrogen Receptor (RM292), RMab	TC45	PDP45

* New antibody batches received after 2024-01-01

Antibody (Clone) Name	Retrieval Protocol	Staining Protocol
Factor XIIIa (EP292), RMab	TC45	PDP45
Fascin (BSB-36), MMab	TC45	PDP45
Fumarate Hydratase/Fumarase (BSB-151), MMab	TC45	PDP45
GATA3 (EP368), RMab	TE45	PDP45
GATA3 (L50-823), MMab	TE45	PDP45
GATA3 (L50-823), MMab	TC45	PDP45
*GFAP (G-A-5), MMab	TE45	PDP45
GH (BSB-99), MMab	TC45	PDP45
Glucagon (BSB-111), MMab	TE45	PDP45
GLUT-1 (RBT-GLUT1), RMab	TC45	PDP45
Glutamine Synthetase (GS-6), MMab	TC45	PDP45
Glypican-3 (1G12), MMab	TC45	PDP45
*Granzyme B (EP230), RMab	TC45	PDP45
Granzyme B (Polyclonal), RPab	TC45	PDP45
HEG1 (SKM9-2), MMab	TC45	PDP45
Helicobacter Pylori (BSB-37), MMab	TC45	PDP45
Helicobacter Pylori (EP279), RMab	TC45	PDP45
Hepatitis B Virus Core Antigen (Polyclonal), RPab	TC45	PDP45
Hepatitis B Virus Surface Antigen (A10F1), MMab	TC45	PDP45
HER-2 neu (RBT-HER2), RMab	TC45	PDP45
Herpes Simplex Virus I & II (10A3 & BSB-116), MMab	TC45	PDP45
Herpes Simplex Virus II (BSB-116), MMab	TC45	PDP45
Herpes Simplex Virus II (Polyclonal), RPab	TC45	PDP45
HHV-8 (13B10), MMab	TC45	PDP45
HHV-8 (RBT-HHV8), RMab	TC45	PDP45
Histone H3 Phospho (EP233), RMab	TE45	PDP45
hPL (Polyclonal), RPab	TC45	PDP45
HPV (BSB-66), MMab	TC45	PDP45
HPV16 (CAMVIR-1), MMab	TE45	PDP45
HSP70 (RM432), RMab	TC45	PDP45
ICOS/CD278 (RM417), RMab	TE45	PDP45
IgD (EP173), RMab	TE45	PDP45
IgD (Polyclonal), RPab	TC45	PDP45

* New antibody batches received after 2024-01-01

Antibody (Clone) Name	Retrieval Protocol	Staining Protocol
IgG4 (BSB-96), MMab	TC45	PDP45
Inhibin alpha (EP378), RMab	TC45	PDP45
Inhibin Alpha (R1), MMab	TC45	PDP45
INI-1 (25), MMab	TE45	PDP45
INI-1 (RBT-INI1), RMab	TE45	PDP45
INSM1 (BSB-123), MMab	TE45	PDP45
INSM1 (RBT-INSM1), RMab	TE45	PDP45
Ki-67 (RM360), RMab	TE45	PDP45
Lambda (BSB-16), MMab	TC45	PDP45
Langerin (12D6), MMab	TC45	PDP45
*LEF-1 (EP310), RMab	TC45	PDP45
LH (BSB-53), MMab	TC45	PDP45
Lysozyme (Polyclonal), RPab	TC45	PDP45
MAGEC2 (EP405), RMab	TC45	PDP45
Mammaglobin (EP249), RMab	TC45	PDP45
Mart-1/Melan-A (A103), MMab	TC45	PDP45
Mart-1/Melan-A (M2-7C10), MMab	TE45	PDP45
Melanoma Cocktail: HMB-45, MART-1 & Tyrosinase (HMB-45, A103 & BSB-6), MMab	TC45	PDP45
Melanoma KBA.62 (KBA.62), MMab	TE45	PDP45
Melanoma PNL2 (PNL2), MMab	TC45	PDP45
Melanosome HMB45 (HMB-45), MMab	TC45	PDP45
Mesothelial Cell (HBME-1), MMab	TC45	PDP45
MiTF (C5 & D5), MMab	TC45	PDP45
*MLH1 (G168-728), MMab	TE45	PDP45
*MLH1 (RBT-MLH1), RMab	TE45	PDP45
*MSH2 (BSB-147), MMab	TE45	PDP45
*MSH2 (RBT-MSH2), RMab	TE45	PDP45
*MSH6 (44), MMab	TE45	PDP45
*MSH6 (EP49), RMab	TE45	PDP45
MTAP (RBT-MTAP), RMab	TE45	PDP45
MUC1 (BSB-44), MMab	TC45	PDP45
MUC1 (EP85), RMab	TC45	PDP45

* New antibody batches received after 2024-01-01

Antibody (Clone) Name	Retrieval Protocol	Staining Protocol
MUC4 (8G7), MMab	TE45	PDP45
MUC4 (EP256), RMab	TE45	PDP45
MUC6 (CLH5), MMab	TC45	PDP45
MUM1 (EP190), RMab	TC45	PDP45
Mycobacterium tuberculosis (Polyclonal), RPab	TC45	PDP45
Myelin Basic Protein (EP207), RMab	TC45	PDP45
Myeloperoxidase (EP151), RMab	TC45	PDP45
Myeloperoxidase (Polyclonal), RPab	TC45	PDP45
Myeloperoxidase/MPO (BSB-180), MMab	TC45	PDP45
MyoD1 (EP212), RMab	TC45	PDP45
Myosin Smooth Muscle (BSB-17), MMab	TE45	PDP45
Napsin A (EP205), RMab	TC45	PDP45
Nestin (EP287), RMab	TC45	PDP45
NeuN (A60), MMab	TC45	PDP45
NGFR (BSB-18), MMab	TC45	PDP45
NKX3.1 (EP356), RMab	TE45	PDP45
*NKX3.1 (RM430), RMab	TE45	PDP45
NRAS (RBT-NRAS), RMab	TE45	PDP45
NSE (BSB-94), MMab	TC45	PDP45
NUTM1 (RBT-NUTM1), RMab	TC45	PDP45
OCT-2 (EP115), RMab	TE45	PDP45
OCT-4 (RBT-OCT4), RMab	TC45	PDP45
OLIG2 (EP112), RMab	TE45	PDP45
OLIG2 (RBT-OLIG2), RMab	TE45	PDP45
p16 (RBT-p16), RMab	TC45	PDP45
p16 (RM267), RMab	TC45	PDP45
p21 (DCS-60.2), MMab	TE45	PDP45
p27 (SX53G8), MMab	TE45	PDP45
p40 (ZR8), RMab	TE45	PDP45
p53 (DO7), MMab	TC45	PDP45
p57 (Kp10), MMab	TE45	PDP45
p63 (4A4), MMab	TE45	PDP45
p63 (EP174), RMab	TE45	PDP45

* New antibody batches received after 2024-01-01

Antibody (Clone) Name	Retrieval Protocol	Staining Protocol
PAX-5 (RBT-PAX5), RMab	TE45	PDP45
PAX-8 (RM436), RMab	TE45	PDP45
*PD-1/CD279 (NAT-105), MMab	TE45	PDP45
PGP 9.5 (BSB-46), MMab	TE45	PDP45
PHOX2B (EP312), RMab	TC45	PDP45
PLAP (BSB-47), MMab	TC45	PDP45
PLAP (EP194), RMab	TC45	PDP45
*PMS2 (EP51), RMab	TC45	PDP45
Pneumocystis jirovecii (3F6), MMab	TC45	PDP45
Podoplanin/D2-40 (D2-40), MMab	TC45	PDP45
PRAME (RBT-PRAME), RMab	TC45	PDP45
Prealbumin/Transthyretin (BSB-125), MMab	TE45	PDP45
Progesterone Receptor (BSB-2), MMab	TC45	PDP45
Progesterone Receptor (EP2), RMab	TC45	PDP45
Progesterone Receptor (RBT-22), RMab	TC45	PDP45
Prolactin (PRL02), MMab	TC45	PDP45
PSA (BSB-7), MMab	TC45	PDP45
PU.1 (EP18), RMab	TC45	PDP45
Renal Cell Carcinoma (PN-15), MMab	TC45	PDP45
S-100 (4C4.9), MMab	TC45	PDP45
S100P (EP186), RMab	TC45	PDP45
S100P (RBT-S100P), RMab	TC45	PDP45
SALL4 (6E3), MMab	TE45	PDP45
SALL4 (EP299), RMab	TE45	PDP45
SARS-CoV-2 (BSB-134), MMab	TC45	PDP45
SDHB (BSB-131), MMab	TC45	PDP45
SMAD4/DPC4 (RBT-SMAD4), RMab	TC45	PDP45
Somatostatin (BSB-113), MMab	TC45	PDP45
SOX-10 (EP268), RMab	TC45	PDP45
SS18-SSX (RBT-SS18-SSX), RMab	TC45	PDP45
STAT6 (EP325), RMab	TC45	PDP45
STAT6 (RM473), RMab	TE45	PDP45
Synaptophysin (EP158), RMab	TC45	PDP45

* New antibody batches received after 2024-01-01

Antibody (Clone) Name	Retrieval Protocol	Staining Protocol
Synaptophysin (Polyclonal), RPab	TC45	PDP45
TCL1 (EP105), RMab	TC45	PDP45
TCR Alpha (BSB-126), MMab	TC45	PDP45
TCR Beta (BSB-117), MMab	TE45	PDP45
TCR Delta (BSB-127), MMab	TC45	PDP45
TdT (RBT-TdT), RMab	TE45	PDP45
TFE3 (EP285), RMab	TC45	PDP45
Thyroid Peroxidase (EP159), RMab	TC45	PDP45
TIA-1 (RBT-TIA1), RMab	TC45	PDP45
TIA-1 (TIA-1), MMab	TC45	PDP45
TLE1 (1F5), MMab	TC45	PDP45
TLE1 (BSB-142), MMab	TE45	PDP45
TLE1 (RBT-TLE1), RMab	TE45	PDP45
Toxoplasma gondii (Polyclonal), RPab	TC45	PDP45
TRAcP (9C5), MMab	TE45	PDP45
Trop-2 (BSB-148), MMab	TE45	PDP45
TRPS1 (EP392), RMab	TC45	PDP45
Tryptase (G3), MMab	TC45	PDP45
TSH (BSB-56), MMab	TC45	PDP45
Tyrosinase (BSB-6), MMab	TC45	PDP45
Varicella Zoster Virus (SG1-1), MMab	TC45	PDP45
Vimentin (V9), MMab	TC45	PDP45
WT1 (6F-H2), MMab	TC45	PDP45
Zap-70 (2F3.2), MMab	TE45	PDP45



TintoStainer *Plus* Protocols

* New antibody batches received after 2024-01-01

www.biosb.com | 1-805-692-2768 | sales@biosb.com

BIO SB TintoStainer Plus Automatic IHC Stainer



Product Description	Catalog #
TintoStainer Plus Automated System	BSB-7400
TintoChamber (pack of 50)	BSB-7450
Tinto Mixing Station Kit	BSB-7453
TintoReagent Container 7mL	BSB-7454
TintoReagent Container 30mL	BSB-7457
TintoSlide Tray	BSB-7464
TintoReagent Rack	BSB-7465



Technical Specifications

Slide Capacity:

30 slides

Temperature Control:

Room temperature ~ 100°C

Reagent Container Capacity:

7ml and 30 ml

Number of Reagent Containers:

36

Bulk Reagent Container Capacity:

1.5L

Hazardous Waste Container Capacity:

1.5L

External Bulk Waste Container Capacity:

18L

Operating Voltage:

100~240V 50/60Hz

Power Consumption:

1200VA

Operation Temperature:

5 °C~35 °C

Operating Humidity:

10~80% RH

Weight:

200KG

Dimensions (WxDxH):

750 x 800 x 1300mm

Bio SB Inc.

5385 Hollister Ave., Building 8, #108, Santa Barbara, CA 93111, USA
 Tel (USA): 1-800-561-1145 | Tel (Int): +1-805-692-2768 | Fax: 805-692-2769
 E-mail: sales@biosb.com | Website: www.biosb.com