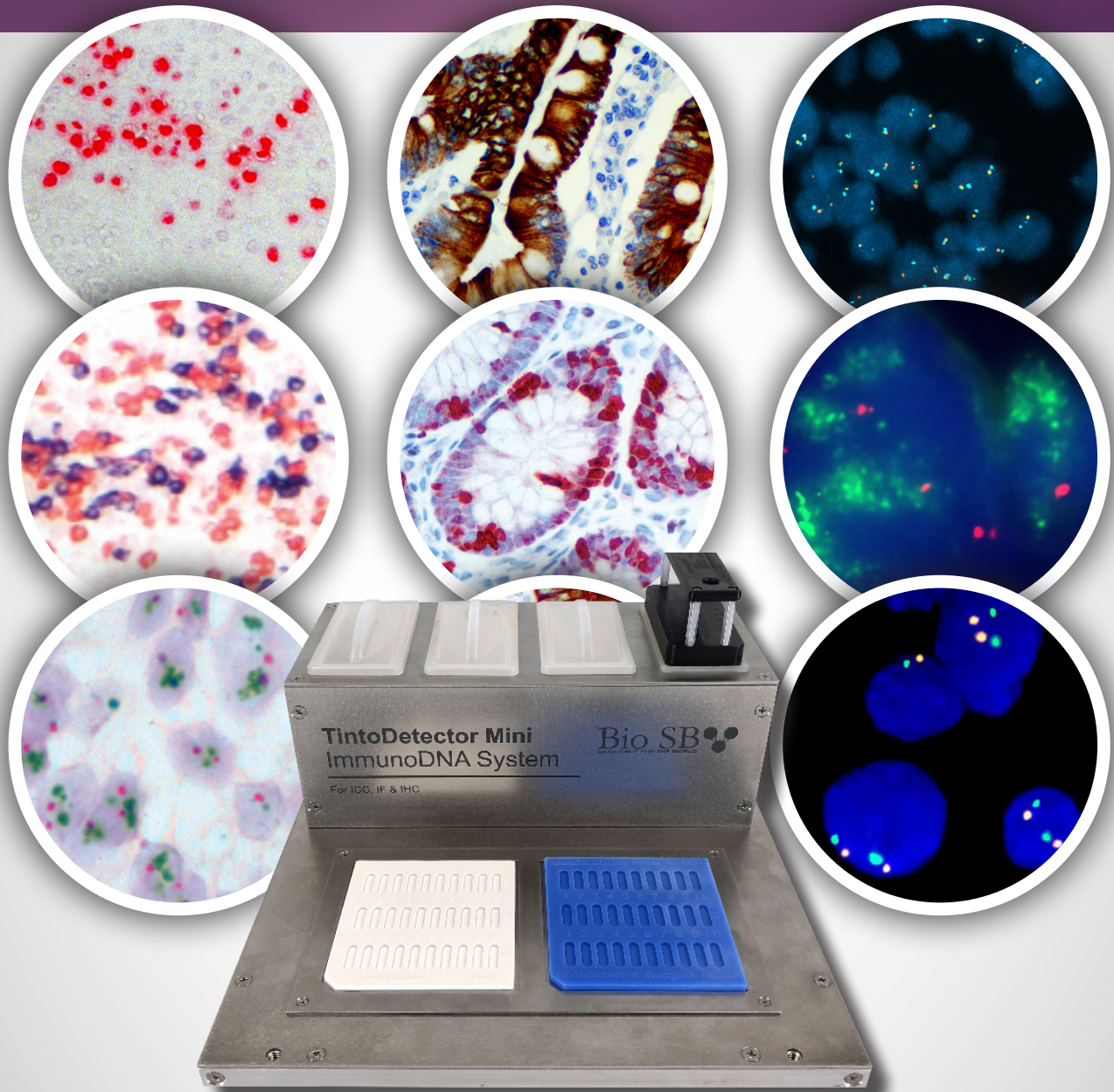


TINTODETECTOR BIO SB MINI IMMUNO SYSTEM

Compact System for Immunocytochemistry, Immunofluorescence and Immunohistochemistry



Perform Immunohistochemistry (IHC),
Immunocytochemistry (ICC), and Immunofluorescence (IF)
in one easy to use open platform.

BIO^{•••}SB TintoDetector Mini Immuno System

The Bio SB TintoDetector Mini is a compact pathology system which allows for the full implementation of immunohistochemical (IHC), Immunocytochemistry (ICC) and Immunofluorescence (IF) protocols. Ideal for use in diagnostic or research laboratories looking for a cost-effective and open platform.

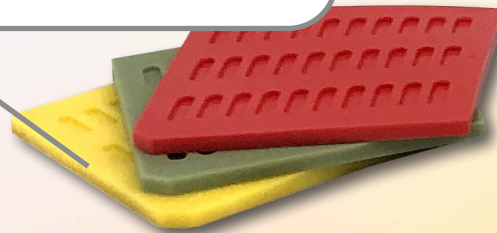
The Bio SB TintoDetector system consists of a durable stainless steel housing, TintoDetector Slide Handle, four solution dishes, five 30-well reagent holders and one package of TintoDetector Pads. With a compact footprint, ease of use and versatility, the TintoDetector offers flexible protocol implementation at a competitive price.

TintoDetector Solution Dishes

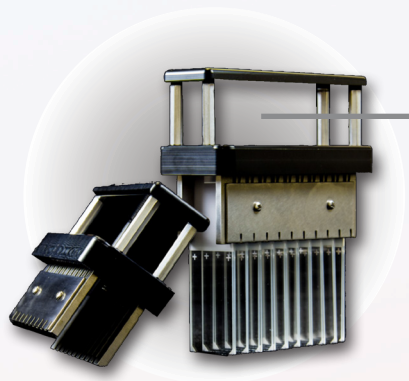
- Store alcohols, buffers, counterstains, kerosene, or other solutions.
- Holds up to four 200 mL solutions which are easily and rapidly removed from unit.

30-Well Reagent Holders

- Provided with five 30-well reagent holders.
- Apply up to 200 µl of reagent per well



Product Description	Catalog #
TintoDetector Mini Complete System	BSB 7085
TintoRetriever Pressure Cooker	BSB 7015
TintoDetector Slide Holder for Cap Gap Slides	BSB 7003
TintoDetector 30-well Reagent Holder, Pack of 5	BSB 7004
TintoDetector Absorbent Pads, Box of 10	BSB 7036
TintoDetector Cap Gap Plus Slides, Box of 72	BSB 7006
TintoDetector (Full Size) Complete System Bundle with Incubator	BSB 7000



TintoDetector Slide Handle

- Functions with TintoDetector Cap Gap Slides.
- Durable stainless steel construction.
- Holds 20 paired slides in one handle.

Stainless Steel Workstation

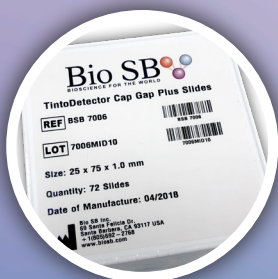
- Stainless steel construction ensures durability.
- Small footprint (12" x 12"). Lightweight design for easy installation or relocation.



TintoDetector Mini Accessories



TintoDetector Pads (BSB 7036)
Absorbent pads for use in reagent washes



TintoDetector Cap Gap Plus Slides (BSB 7006)
Box of 72 Slides



Bio SB TintoRetriever (BSB 7015)
Cost effective epitope retrieval

BIO^{SB} TintoDetector Mini and Fast Mohs IHC

The Bio SB TintoDetector Mini Immuno System was developed in conjunction with Bio SB's TintoFast antibodies and detection systems for Fast Mohs IHC. The Bio SB Fast Mohs IHC products are a system of highly sensitive non-biotin monovalent Fab micropolymer IHC detection kits and TintoFast IVD antibodies for melanoma, BCC, SCC, and other Mohs surgery related conditions. Our innovative IHC detection systems and high affinity monoclonal antibodies, have opened the doors for a faster and accurate immunohistochemistry applicable to Mohs surgery. Using the TintoDetector Mini's small footprint allows the user to utilize a small lab space to perform Fast Mohs IHC.

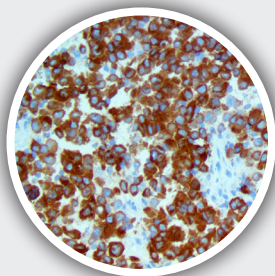
BCC, SCC and Carcinoma Antibodies
TintoFast Androgen Receptor, MAb
TintoFast CD31, MAb
TintoFast Cytokeratin 5/6, MAb
TintoFast Cytokeratin Cocktail, AE1/AE3, MAb
TintoFast EpCAM BerEP4, MAb
TintoFast EMA, MAb
TintoFast p40, RMAb
TintoFast p63, MAb
TintoFast Podoplanin, MAb
TintoFast NGFR, MAb

Dermatofibrosarcoma Protuberans (DFSP) Antibodies
TintoFast CD34, MAb

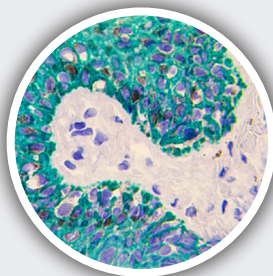
Melanoma Antibodies
TintoFast Ki-67, RMAb
TintoFast MART-1, MAb
TintoFast Melanoma Cocktail (MART-1, Melanosome HMB-45, Tyrosinase), MAb
TintoFast Melanosome HMB-45, MAb
TintoFast MiTF, MAb
TintoFast PRAME, RMAb
TintoFast SOX-10, MAb

Neuroendocrine Tumor Antibodies
TintoFast Chromogranin A, MAb
TintoFast Synaptophysin, RPAb

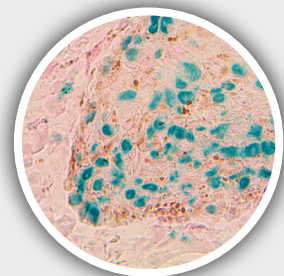
Primary Cutaneous Adnexal Neoplasm Antibodies
TintoFast Adipophilin, MAb
TintoFast Androgen Receptor, MAb
TintoFast Cytokeratin 5/6, MAb
TintoFast EMA, MAb
TintoFast p63, MAb
TintoFast Podoplanin, MAb



MART-1 using Fab DAB HRP Brown on a Frozen Melanoma

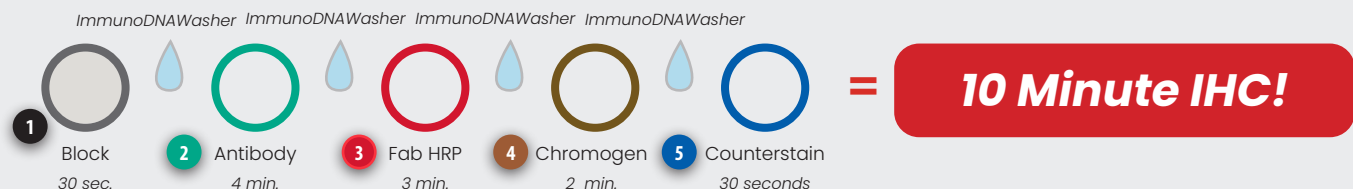


CK AE1 / AE3 using Fab HRP Green on a Frozen Melanoma



SOX-10 using Fab HRP Green on a Frozen Melanoma

Fast Mohs Fab PolyDetector HRP Protocol



BioSB Inc.

5385 Hollister Ave., Building 8, #108, Santa Barbara, CA 93111, USA

Tel (USA): 1-800-561-1145 | Tel (Int): +1-805-692-2768 | Fax: 805-6922769

E-mail: sales@biosb.com | Website: www.biosb.com