

# TINTODETECTOR BIO SB IMMUNODNA SYSTEM

Compact System for Molecular Pathology



Perform Immunohistochemistry (IHC), Immunocytochemistry (ICC), Immunofluorescence (IF) and In-situ Hybridization (ISH) in one easy to use open platform.

# BIO<sup>SB</sup> TintoDetector ImmunoDNA System

The Bio SB TintoDetector is a compact molecular pathology system which allows for the full implementation of immunohistochemical (IHC), Immunocytochemistry (ICC), Immunofluorescence (IF) and in-situ hybridization (ISH) protocols. Ideal for use in diagnostic or research laboratories looking for a cost-effective, semi-automated and open platform.

The Bio SB TintoDetector system consists of a durable stainless steel housing, eight solution dishes, incubator unit (for reagent incubation, nucleic acid denaturation, probe hybridization and stringency washes), and 30-well reagent holders. With a compact footprint, ease of use and versatility, the TintoDetector offers flexible protocol implementation at a competitive price.

## TintoDetector Incubator

- Allows for implementation of a variety of IHC, ICC, IF and ISH protocols
- Incubator ensures rapid and consistent heat application of up to 110°C.
- Three programmable temperature presets.
- Humidity chamber prevents evaporation of reagent.



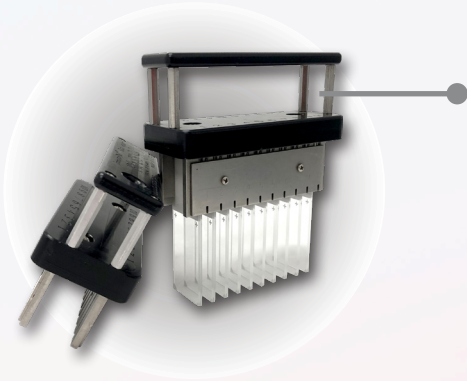
## TintoDetector Systems and Accessories

Product Description	Catalog #
TintoDetector Complete System	BSB 7000
TintoDetector Staining System - Without Incubator	BSB 7001
TintoDetector Incubator	BSB 7002
TintoDetector Slide Holder for Cap Gap Slides	BSB 7003
TintoDetector 30-well Reagent Holder (Pack of 5)	BSB 7004
TintoDetector Slide Holder for Hydrophilic Plus Slides	BSB 7035
TintoDetector Absorbent Pads (Box of 10)	BSB 7036

## Stainless Steel Workstation

- Stainless steel construction ensures durability.
- Small footprint for easy installation or relocation.





## TintoDetector Slide Handle

- Functions with TintoDetector Cap Gap Slides.
- Durable stainless steel construction.
- Holds 20 paired slides in one handle.
- Handle fits into incubator unit for easy implementation of Immunohistochemistry (IHC), Immunocytochemistry (ICC), Immunofluorescence (IF) and In-situ Hybridization (ISH) protocols.

## TintoDetector Solution Dishes

- Store alcohols, buffers, counterstains, solvents, or other ancillaries.
- Holds up to eight 200 mL solutions which are easily and rapidly removed from unit.

## 30-Well Reagent Holders

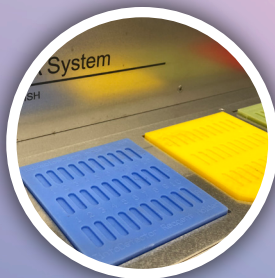
- Storage of four 30-well reagent holders.
- Apply up to 200µl of reagent per well



## TintoDetector Accessories



**TintoDetector Pads (BSB 7036)**  
Absorbent pads for use in reagent washes



**30-Well Reagent Holders (BSB 7004)**  
Apply up to 200µl of reagent per well



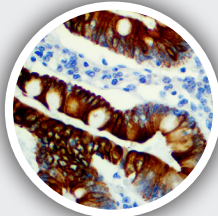
**Bio SB TintoRetriever (BSB 7008)**  
Cost effective epitope retrieval

# TintoDetector Applications

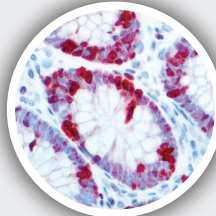
## IHC

### Immunohistochemistry

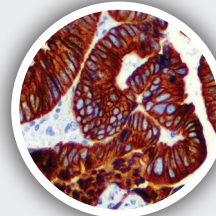
Utilize the TintoDetector in immunohistochemistry (IHC) applications to rapidly implement a protocol while minimizing reagent use (as little as 50 µl per slide). Bundle the TintoDetector with Bio SB Tinto Predilutes and detection systems to ensure standardized results at a competitive price.



HER-3 RMAb  
Colon Carcinoma



Ki-67 RMAb  
Colon Tissue

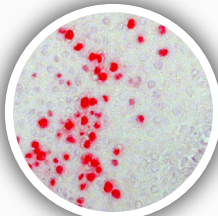


CK8 & CK18 RMAb  
Colon Carcinoma

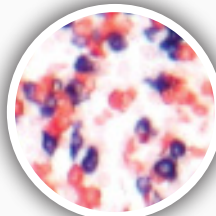
## CISH

### Chromogenic *In-situ* Hybridization

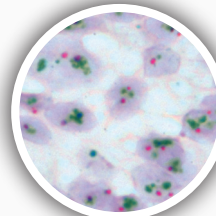
Use the TintoDetector and built-in incubator for nucleic acid denaturation, probe hybridization, stringency and detection. The TintoDetector is optimized to work with CISH kits that require rapid or overnight probe hybridization.



HPV Probe  
Condyloma



Kappa-Lambda  
B-cells

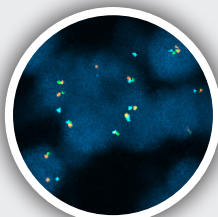


HER2/CEN17  
Gastric Carcinoma

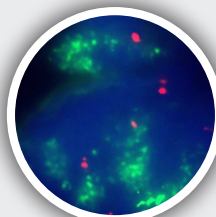
## FISH

### Fluorescent *In-situ* Hybridization

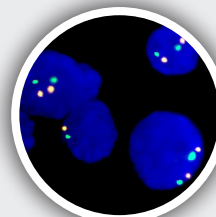
Use the TintoDetector for easy implementation of Fluorescent *in-situ* hybridization (FISH) technology into your clinical or research laboratory. The TintoDetector can be utilized with single, dual, triple, and quadruple color FISH probes.



ALK/EML4  
Lung Carcinoma



MDM2/CEN12  
Liposarcoma



MET/CEN17  
Normal Cells

Bio SB Inc.

5385 Hollister Ave., Building 8, #108, Santa Barbara, CA 93111, USA  
Tel (USA): 1-800-561-1145 | Tel (Int): +1-805-692-2768 | Fax: 805-6922769  
E-mail: sales@biosb.com | Website: www.biosb.com