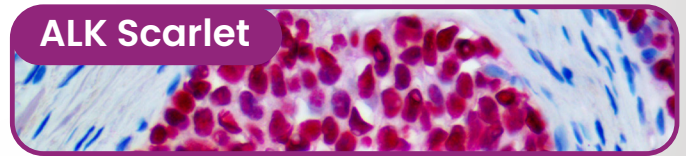
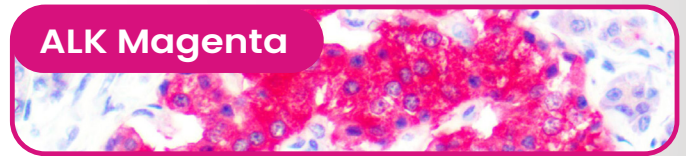
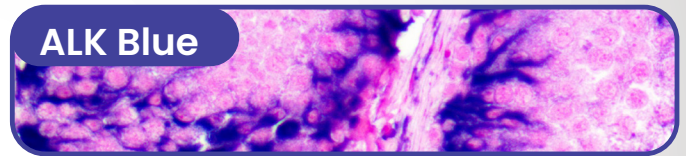
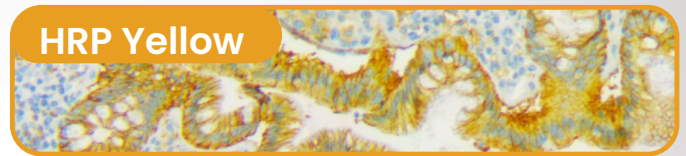
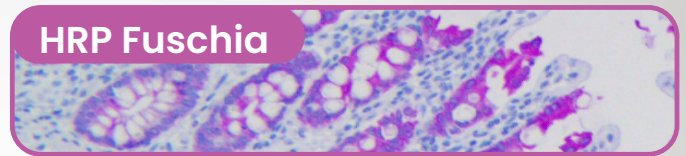
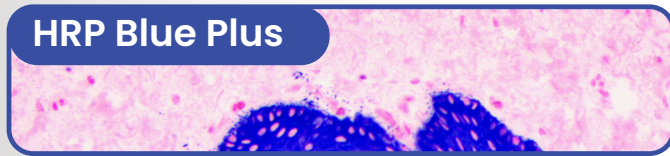
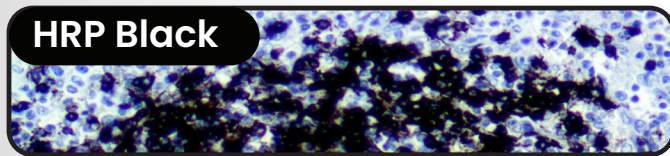
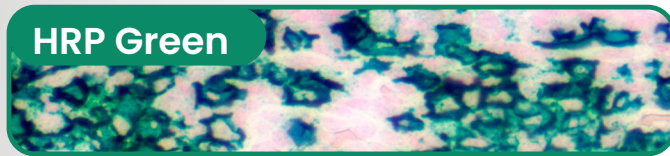
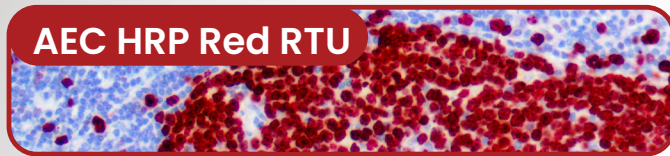
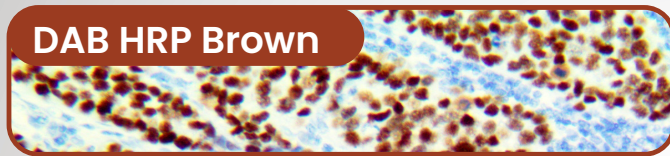


SUBSTRATE-CHROMOGENS **BIO**SB FOR IMMUNOHISTOCHEMISTRY

For Use in AP or HRP Based Detection Systems



	DAB HRP Brown	AEC HRP Red	HRP Green	HRP Black	HRP Blue Plus	HRP Fuschia	HRP Mulberry	HRP Yellow	ALK Blue	ALK Magenta	ALK Scarlet
Hematoxylin	+	+	+/-	+/-	-	+	+	+	-	+	+
Nuclear Fast Red	+/-	-	+	+	+	-	-	-	+	-	-
Mounting Media	P	A/P*	A/P**	A/P*/P+	A/P**	P/A	A/P*	A/P*	P/A	A/P	A/P

P* : ChromoProtector required prior to permamounting | P** : Fast ChromoProtector required prior to permamounting

Bio SB substrate-chromogens are highly sensitive chromogens that are optimized for use in immunohistochemistry. Multiplex IHC users can pair Bio SB AP & HRP PolyDetector systems with any combination of AP & HRP substrate-chromogens to detect multiple antigens on a tissue. (Note: AP systems must use AP chromogens and same with HRP)

HRP Substrate-Chromogens

DAB HRP Brown 2 components			AEC HRP Red Ready-to-use			HRP Green 2 components		
Vol.	Catalog #		Vol.	Catalog #		Vol.	Catalog #	
15 mL	BSB 0015		15 mL	BSB 0011		15 mL	BSB 0128	
50 mL	BSB 0016		50 mL	BSB 0012		50 mL	BSB 0129	
100 mL	BSB 0017		100 mL	BSB 0013		100 mL	BSB 0130	
200 mL	BSB 0018		200 mL	BSB 0014		200 mL	BSB 0131	
500 mL	BSB 0018A		500 mL	BSB 0061A		500 mL	BSB 0132	
1000 mL	BSB 0018B	1000 mL	BSB 0061	1000 mL	BSB 0133			

HRP Black 2 components			HRP Blue Plus 2 components			HRP Yellow 2 components		
Vol.	Catalog #		Vol.	Catalog #		Vol.	Catalog #	
15 mL	BSB-0361-15		15 mL	BSB-0363-15		15 mL	BSB-0364-15	
50 mL	BSB-0361-50		50 mL	BSB-0363-50		50 mL	BSB-0365-50	
100 mL	BSB-0361-100		100 mL	BSB-0363-100		100 mL	BSB-0365-100	
200 mL	BSB-0361-200		200 mL	BSB-0363-200		200 mL	BSB-0365-200	
500 mL	BSB-0361-500		500 mL	BSB-0363-500		500 mL	BSB-0365-500	
1000 mL	BSB-0361-1000	1000 mL	BSB-0363-1000	1000 mL	BSB-0365-1000			

HRP Mulberry 2 components			HRP Fuschia 2 components			ChromoProtector		
Vol.	Catalog #		Vol.	Catalog #			Vol.	Catalog #
15 mL	BSB-0362-15		15 mL	BSB-0364-15			15 mL	BSB 0151
50 mL	BSB-0362-50		50 mL	BSB-0364-50			50 mL	BSB 0152
100 mL	BSB-0362-100		100 mL	BSB-0364-100			100 mL	BSB 0153
200 mL	BSB-0362-200		200 mL	BSB-0364-200			200 mL	BSB 0154
500 mL	BSB-0362-500		500 mL	BSB-0364-500			500 mL	BSB 0155
1000 mL	BSB-0362-1000	1000 mL	BSB-0364-1000	1000 mL	BSB 0156			

AP Substrate-Chromogens

ALK Blue 2 component			ALK Scarlet 2 component			ALK Magenta 3 component		
Vol.	Catalog #		Vol.	Catalog #		Vol.	Catalog #	
15 mL	BSB 0062		15 mL	BSB 0138		15 mL	BSB 0077	
50 mL	BSB 0063		50 mL	BSB 0139		50 mL	BSB 0078	
100 mL	BSB 0064		100 mL	BSB 0140		100 mL	BSB 0079	
200 mL	BSB 0065		200 mL	BSB 0141		200 mL	BSB 0080	
1000 mL	BSB 0066		1000 mL	BSB 0142		1000 mL	BSB 0081	

Bio SB Inc.

5385 Hollister Ave., Building 8, #108, Santa Barbara, CA 93111, USA

Tel (USA): 1-800-561-1145 | Tel (Int): +1-805-692-2768 | Fax: 805-6922769

E-mail: sales@biosb.com | Website: www.biosb.com